

vtech[®]
Baby

User's Manual



Learning Wheels School Bus



© 2015 VTech
Printed in China
91-002973-002 UK

VTech understands that a child's needs and abilities change as they grow and with that in mind we develop our toys to teach and entertain at just the right level...

vtech Baby

Toys that will stimulate their interest in different textures, sounds and colours

I am...

...responding to colours, sounds and textures

...understanding cause and effect

...learning to touch, reach, grasp, sit-up, crawl and toddle

Birth-36 months



Pre-School

Interactive toys to develop their imagination and encourage language development

I want...

...to get ready for school by starting to learn the alphabet and counting

...my learning to be as fun, easy and exciting as can be

...to show my creativity with drawing and music so my whole brain develops

3-6 years



Electronic Learning Computers

Cool, aspirational and inspiring computers for curriculum related learning

I need...

...challenging activities that can keep pace with my growing mind

...intelligent technology that adapts to my level of learning

...National Curriculum based content to support what I'm learning at school

4-10 years

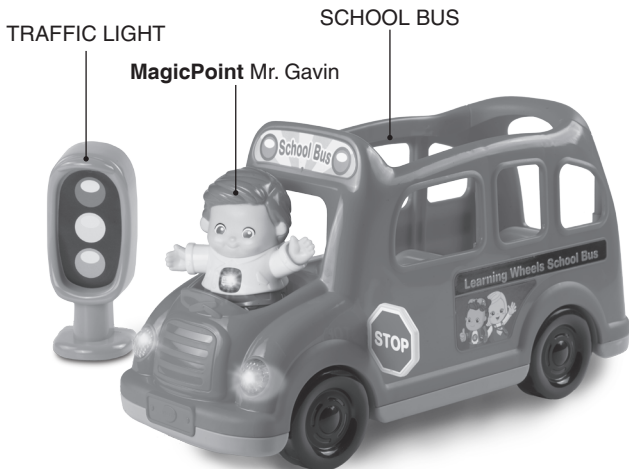


To learn more about this and other VTech® products, visit www.vtech.co.uk

INTRODUCTION

Thank you for purchasing the **VTech® Toot-Toot Friends Learning Wheels School Bus!**

Take a ride on the **VTech® Toot-Toot Friends Learning Wheels School Bus**. Watch friends come to life on MagicPoint locations. Put Mr. Gavin in the driver's seat and the bus will light up and move forwards!



INCLUDED IN THIS PACKAGE

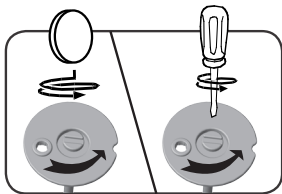
- One **VTech® Toot-Toot Friends** character
- One **VTech® Toot-Toot Friends** school bus with 3 **MagicPoint** locations
- One **VTech® Toot-Toot Friends** traffic light accessory piece



- One user's manual

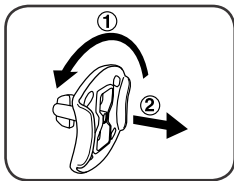
Unlock the packaging locks:

There is one packaging lock located on the character and one packaging lock located on the school bus.



To unlock the packaging lock on the character:

- ① Use a coin or a screwdriver to loosen the screw.
- ② Pull out the screw with the packaging lock.



To unlock the packaging lock on the school bus:

- ① Rotate the packaging lock 90 degrees counter-clockwise.
- ② Pull out the packaging lock.

WARNING:

All packing materials, such as tape, plastic sheets, packaging locks and tags are not part of this toy, and should be discarded for your child's safety.

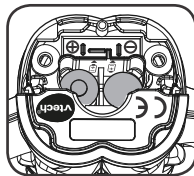
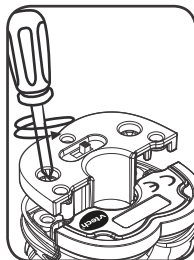
NOTE:

Please keep user's manual as it contains important information.

GETTING STARTED

BATTERY INSTALLATION

1. Make sure the unit is **OFF**.
2. Locate the battery cover on the bottom of the unit. Use a screwdriver to loosen the screws.
3. Install 2 new AAA size (LR03/AM-4) batteries following the diagram inside the battery box. (The use of new alkaline batteries is recommended for maximum performance.)
4. Replace the battery cover and tighten the screws to secure.



IMPORTANT

This product is in a try-me mode in the packaging. To activate normal play mode, please complete the following steps:

1. Slide the **ON/OFF SWITCH** to the **OFF** (●) position.
2. Press and hold the **LIGHT-UP BUTTON** for 2 seconds.
3. Slide the **ON/OFF SWITCH** to the **ON** (⏻) position to activate normal play mode.

BATTERY NOTICE

- Use new alkaline batteries for maximum performance.
- Use only batteries of the same or equivalent type as recommended.
- Do not mix different types of batteries: alkaline, standard (carbon-zinc) or rechargeable (Ni-Cd, Ni-MH), or new and used batteries.
- Do not use damaged batteries.
- Insert batteries with the correct polarity.
- Do not short-circuit the battery terminals.
- Remove exhausted batteries from the toy.
- Remove batteries during long periods of non-use.
- Do not dispose of batteries in fire.
- Do not charge non-rechargeable batteries.
- Remove rechargeable batteries from the toy before charging (if removable).
- Rechargeable batteries are only to be charged under adult supervision.

DISPOSAL OF BATTERIES AND PRODUCT



The crossed-out wheellie bin symbols on products and batteries, or on their respective packaging, indicates they must not be disposed of in domestic waste as they contain substances that can be damaging to the environment and human health.



The chemical symbols Hg, Cd or Pb, where marked, indicate that the battery contains more than the specified value of mercury (Hg), cadmium (Cd) or lead (Pb) set out in Battery Directive (2006/66/EC).



The solid bar indicates that the product was placed on the market after 13th August, 2005.

Help protect the environment by disposing of your product or batteries responsibly.

For more information, please visit:

www.recycle-more.co.uk

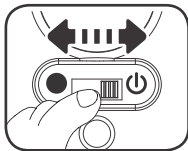
www.recyclenow.com

PRODUCT FEATURES

1. ON/OFF SWITCH

The **ON/OFF SWITCH** is located on the bottom of the character.

To turn the unit on, slide the **ON/OFF SWITCH** to the **ON** (⏻) position. To turn the unit off, slide the **ON/OFF SWITCH** to the **OFF** (●) position.



2. AUTOMATIC SHUT-OFF

To preserve battery life, the **VTech® Toot-Toot Friends** character will automatically power down after several minutes of no input. The unit can only be turned on again by pressing the **LIGHT-UP BUTTON** or placing it on a **MagicPoint** location.

ACTIVITIES

1. Slide the **ON/OFF SWITCH** to turn the unit **ON**. Then press the **LIGHT-UP BUTTON** to hear phrases, songs, melodies and fun sounds. The light will flash with the sounds.

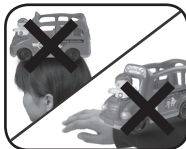


2. Place the character on the **MagicPoint** located on the **SCHOOL BUS** driver seat to see its lights turn on and to see it move forwards. You will also hear phrases, fun sounds, short tunes and sing-along songs. For added fun, the character can interact with other **VTech® Toot-Toot Friends** playsets (each sold separately).



For optimal performance, play with your **Toot-Toot Friends** school bus on a smooth and flat surface.

Important Note: For your child's safety, only play with the toy on the ground. Do not roll the toy on your clothing, body or hair. If something gets caught in the school bus's wheels while the motor is on, remove the character from the school bus to turn off the motor.



3. Place the character on one of the two **MagicPoint** passenger locations to hear fun responses.



4. An added **TRAFFIC ACCESSORY PIECE** is included for pretend-play fun.



CARE & MAINTENANCE

1. Keep the unit and its metal parts clean by wiping them with a slightly damp cloth.
2. Keep the unit out of direct sunlight and away from any direct heat sources.
3. Remove the batteries when the unit is not in use for an extended period of time.
4. Do not drop the unit on a hard surface and do not expose the unit to excess moisture or water.

TROUBLESHOOTING

If for some reason the unit stops working or malfunctions while playing with the **MagicPoint** accessory, please remove the character from the

accessory and place the character back onto the **MagicPoint**.

If the unit still does not function, or if for some reason the unit stops working or malfunctions on its own, please follow these steps:

1. Please turn the unit **OFF**.
2. Interrupt the power supply by removing the batteries.
3. Let the unit stand for a few minutes, then replace the batteries.
4. Turn the unit **ON**. The unit should now be ready to play again.
5. If the product still does not work, replace with a new set of batteries.

If the problem persists, please call our Consumer Services Department on 01235 546810 (from UK) or +44 1235 546810 (outside UK) and a service representative will be happy to help you.

IMPORTANT NOTE:

Creating and developing VTech® products is accompanied by a responsibility that we take very seriously. We make every effort to ensure the accuracy of the information, which forms the value of our products. However, errors sometimes can occur. It is important for you to know that we stand behind our products and encourage you to call our Consumer Services Department on 01235 546810 (from UK) or +44 1235 546810 (outside UK), with any problems and/or suggestions that you might have. A service representative will be happy to help you.

**CLASS 1
LED PRODUCT**



PRODUCT WARRANTY



Thank you for choosing this quality product from VTech. We hope it will bring many hours of entertainment, imaginative play and learning.

1. The product detailed above is covered by a one year warranty from the date of purchase, against any defects in materials or workmanship.
2. The product may be returned to the place of purchase. Alternatively the product can be returned to VTech Electronics Europe plc (see address below), with proof of purchase, without proof of purchase no replacement will be provided.
3. VTech Electronics Europe plc will examine the product and if it is found to be defective due to faulty materials or workmanship, will replace the product at their discretion.
4. If the product covered by this warranty is damaged due to misuse, modification or unauthorised repair, or because of faulty batteries, battery discharge or incorrect electrical connections, then this warranty becomes void.
5. This warranty is personal to the original purchaser and is not transferable.
6. Breakages to the LCD screen are not covered by the warranty.
7. Returns to VTech Electronics Europe plc should include a cheque or postal order for £1.50 towards the cost of return postage and packaging.
8. Products returned to VTech Electronics Europe plc, should be addressed as follows and packed carefully to avoid damage in transit (Please do not include batteries or adaptor).
Please include details of the fault together with your name and address.

VTech Electronics Europe plc, c/o Tablogix Limited, 200 Milton Park, Abingdon, Oxon OX14 4TA

THIS WARRANTY IS OFFERED AS AN EXTRA BENEFIT AND DOES NOT AFFECT CONSUMERS' STATUTORY RIGHTS.

This warranty is valid for the UK and Eire only. For products purchased outside the UK and Eire, please contact your local distributor or place of purchase.

Join the VTech club online at www.vtech.co.uk

